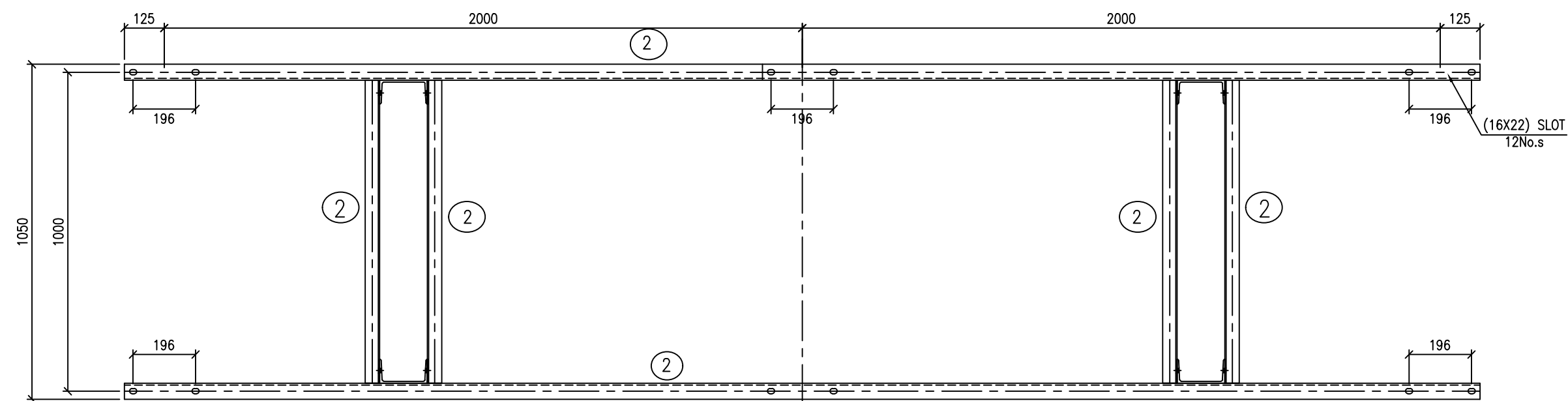
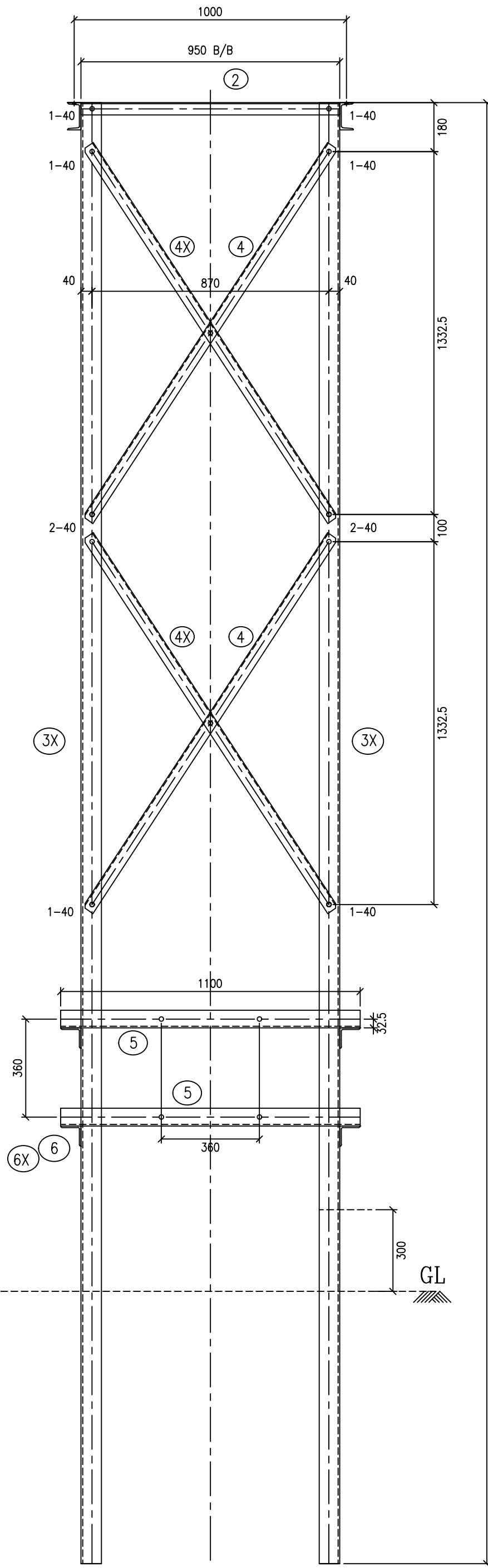


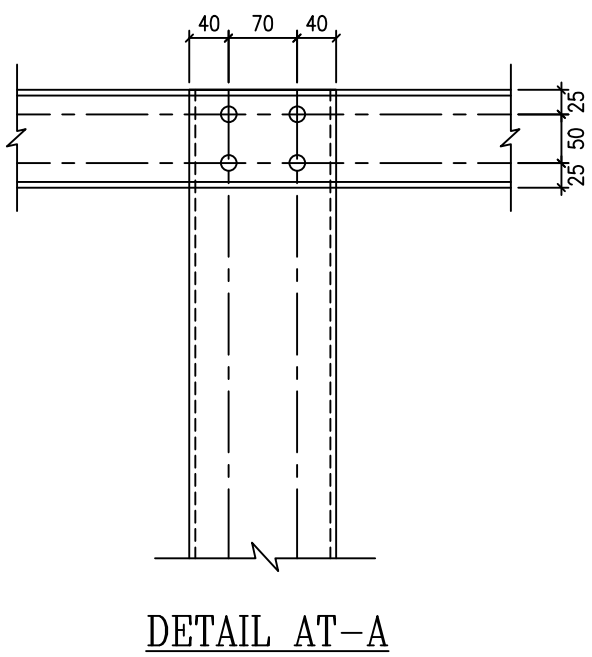
ELEVATION



PLAN



END VIEW



DETAIL AT-A

BILL OF MATERIAL

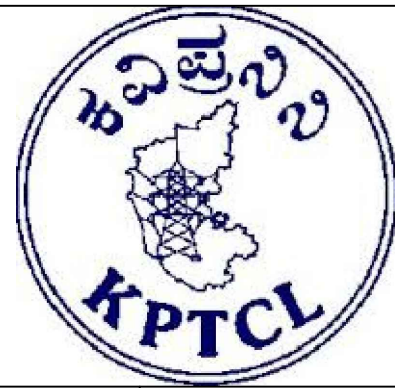
ITEM NO.	SECTION DESCRIPTION	PIECE.WT	QTY	TOT WT
ISO-1	ISMC-100X50-4250 mm	40.63	2	81.26
ISO-2	ISA-45X45X5-950 mm	3.23	4	12.92
ISO-3/3X	ISMC-150X50-5365 mm	90.13	2+2	360.52
ISO-4/4X	ISA-45X45X5-1641 mm	5.58	16	89.28
ISO-5	ISA-65X65X6-1100 mm	6.38	2	25.52
ISO-6, 6X	ISA-75X75X6-475 mm	3.23	2+2	12.92
TOTAL WEIGHT (in Kg)				582.42

LIST OF BOLTS & NUTS

DESCRIPTION OF BOLT	QTY	W.T
BOLT M16X40 mm LG	68	9.94
3.5 TH.SP.WASHER FOR 16Ø BOLT	68	0.86
TOTAL WEIGHT OF NUT & BOLTS		10.08

- NOTES:
1. ALL DIMENSIONS ARE IN MM.
  2. ALL HOLES ARE 17.5MM DIA. FOR 16MM DIA. BOLTS.
  3. ALL STEEL SECTIONS SHALL CONFORM TO IS: 2062.
  4. ALL STEEL SECTIONS, BOLTS, NUTS & PACK WASHERS ARE TO BE HOT DIP GALVANIZED.
  5. ALL BOLTS SHALL CONFORM TO IS:12427(2001), WITH MECHANICAL PROPERTIES CLASS 5.6 AND NUTS SHALL CONFORM TO IS: 1367(PART-VI) OF PROPERTIES CLASS-5.
  6. DIMENSIONAL AND WEIGHT TOLERANCE  $\pm 10\%$ .
  7. THE HEIGHT OF STRUCTURE SHALL BE ADJUSTED TO MATCH WITH LIVE POINT HEIGHT (LPH) AS PER APPROVED SECTIONAL DRAWING.
  8. THE EQUIPMENT MOUNTING DETAILS SHALL BE MATCHED WITH APPROVED EQUIPMENT DRAWINGS.

EQUIPMENT MOUNTING STRUCTURE FOR  
66KV ISOLATOR (LPH = 5500mm)  
(FOR 66/11KV SUBSTATIONS ONLY)



KPTCL/P&C/TECH/66KV/ISO(5.5)	AEE	EE	SEE	CEE
DRAWING NO.	DRAWN/CHECKED	SUBMITTED	RECEIVED	APPROVED

Approval Ltr No.: CEE/P&C/SET/EE(TL)/AEE-9/2021-22/10039-49 Dtd:05.10.2021